

# NATIONAL BROKERS LIMITED

<http://nationalbrokersbd.com/>

**Tea Auctioneers since 1948**

## TEA MARKET REPORT – Sale 28 held on Monday 14<sup>th</sup> November, 2022

**CTC LEAF:** 61,518 packages of Current Season teas on offer met with a strong demand.

**BROKENS:** The best and the selective good Brokens were strongly competed for and were dearer often by upto Tk.5/- to Tk.10/-. Medium categories also met with a fairly good demand and were about steady. Plain types saw fair demand but generally eased a little with a few withdrawals. BLF teas once again met with a limited interest and a fair weight of tea was withdrawn.

**FANNINGS:** Good liquoring invoices met with a strong demand and were often dearer by upto Tk.10/- and more. The Medium types met with fair interest and were about steady to a touch dearer. Plain teas met with fair interest but generally eased with some withdrawals. BLF teas met with limited demand with heavy withdrawals.

**CTC DUST:** 12,733 packages of Current Season teas on offer met with good demand. Good liquoring Dusts were an easier market and sold at a drop of Tk.10/- closely following quality. Mediums met with a good demand and sold well at slightly dearer rates. Plain and BLF Dusts once again met with less demand and saw heavy withdrawals. Blenders lent strong support with fair interest from the Loose tea buyers.

**COMMENTS:** The sale opened on a strong note which continued throughout. The bright liquoring teas were the strongest feature whilst others also sold well in line with quality. Blenders as well as Loose tea buyers were more active this week.

Dusts sold well.

**Our catalogue: (Sale 28) Avg: Tk 222.43, Sold 71.8% & (Sale 27) Avg: Tk 218.14, sold 72.1%.**

### Quotations – This Week – (In Taka)

Brokens	This Week	Last Week	Fannings	This week	Last Week	Dust	This week	Last Week
Large	215-225 nom	NQTA	Best	235-255	235-250	PD	195-280	213-279
Medium	210-220	205-215	Good	220-230	215-225	RD	170-385	140-412
Small	210-225	210-225	Medium	205-210	205-210	D	155-285	180-390
Plain	180-190	175-185	Plain	180-190	175-185	CD	150-315	166-405
BLF	125-145	125-155	BLF	125-145	125-155	BLF	155-170	140-167

Exchange Rates 14<sup>th</sup> November, 2022 Sterling Pound: Tk. 117.8650 dollar: Tk. 100.0000

### Top Prices – This Week

Category – CTC	Garden	Grade	Package	Price	Buyer(s)
Brokens	* Madhupur	GBOP	20	375/-	PA/Jamuna
Fannings	Ghazipore	OF	30	281/-	Karnafuli/HTA
Clonal Brokens	Kedarpur	GBOP(BT1)	10	388/-	Padma
Clonal Fannings	* Madhupur	PF(BT1)	30	380/-	Ispahani/AKT
PD/RD (Incl Clone)	* Madhupur	RD(BT1)	10	385/-	AKT
D (Incl Clone)	* Daragaon	D	20	285/-	Rajdhani/Al-Amin
CD (Incl Clone)	* Amrail	CD	10	315/-	Samia
Oolong	* M.M. Tea Estates Ltd	Oolong	4	1750/-	GT

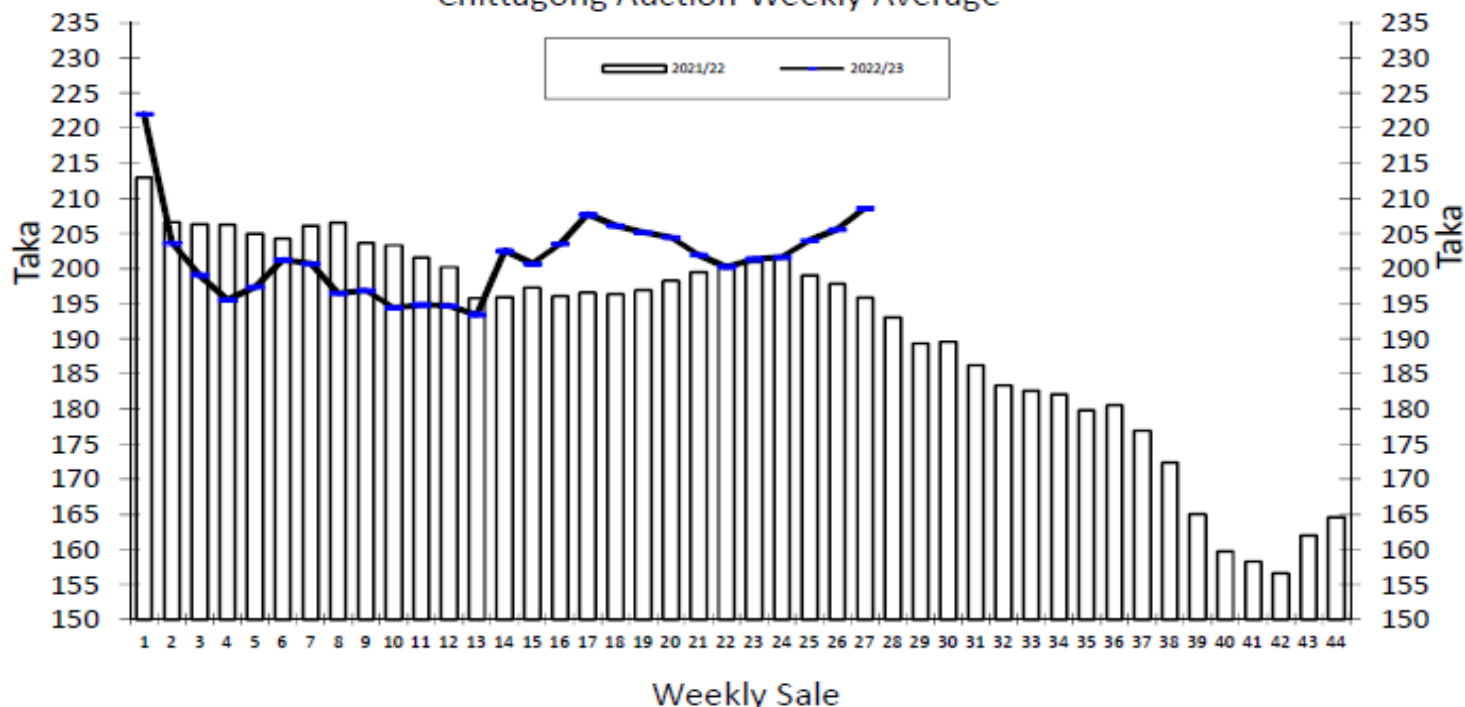
\* Above price(s) realised in our catalogue

### Offerings

	This Sale ( Sale 28 )				Next Sale ( Sale 29 )			
	Season 2022-23		Season 2021-22		Season 2022-23		Season 2021-22	
Type	Packages	Qty/Kg	Packages	Qty/Kg	Packages	Qty/Kg	Packages	Qty/Kg
Leaf	61,518	3,069,748	52,062	2,854,039	59,199	2,954,030	63,891	3,502,505
Dust	12,733	635,377	12,605	682,599	11,946	596,105	12,196	658,693
Total	74,251	3,705,125	64,667	3,536,638	71,145	3,550,136	76,087	4,161,198

Chittagong Auction Average: Sale 27  
Season 2022/23: Tk. 208.59 & Season 2021/22: Tk. 195.83

### Chittagong Auction Weekly Average



Category	For the Sale						Up-to-Date Sale					
	Season 2021/22		Season 2022/23		Season 2021/22		Season 2022/23		(+/-) Season 2021/22			
	Qty. (Kg)	Taka	Qty. (Kg)	Taka	Qty. (Kg)	(%)	Taka	Qty. (Kg)	(%)	Taka	Qty. (Kg)	Taka
CTC LEAF	1,800,744.7	192.74	1,736,381.2	203.50	43,651,601.9	78.1%	196.80	40,668,924.2	78.7%	195.55	-2,982,677.7	-1.26
CTC DUST	419,731.6	209.08	483,921.5	226.85	11,946,393.6	21.4%	212.48	10,951,460.0	21.2%	221.54	-994,933.6	9.06
Sub-Total	2,220,476.3	195.83	2,220,302.7	208.59	55,597,995.5	99.5%	200.17	51,620,384.2	99.9%	201.06	-3,977,611.3	0.89
Orthodox	0.0	0.00	0.0	0.00	26,035.0	0.0%	101.48	0.0	0.0%	0.00	-26,035.0	-101.48
Total	2,220,476.3	195.83	2,220,302.7	208.59	55,624,030.5	99.5%	200.12	51,620,384.2	99.9%	201.06	-4,003,646.3	0.93
Green Tea	35.5	1,260.00	34.0	1,716.18	10,420.9	0.0%	465.50	2,503.5	0.0%	471.29	-7,917.4	5.79
Yellow Tea	0.0	0.00	0.0	0.00	20.0	0.0%	1,400.00	0.0	0.0%	0.00	-20.0	-1,400.00
Total	2,220,511.8	195.85	2,220,336.7	208.61	55,634,471.4	99.6%	200.17	51,622,887.7	99.9%	201.07	-4,011,583.7	0.90
Other (s)	0.0	0.00	0.0	0.00	250,346.2	0.4%	163.83	43,126.3	0.1%	129.18	-207,219.9	-34.65
G.Total	2,220,511.8	195.85	2,220,336.7	208.61	55,884,817.6	100.0%	200.01	51,666,014.0	100%	201.01	-4,218,803.6	1.00

Buyer	For the Sale						Up-to-Date Sale					
	Season 2021/22		Season 2022/23		Season 2021/22		Season 2022/23		(+/-) Season 2021/22			
	Qty. (Kg)	Taka	Qty. (Kg)	Taka	Qty. (Kg)	(%)	Taka	Qty. (Kg)	(%)	Taka	Qty. (Kg)	Taka
Export	0.0	0.00	0.0	0.00	24,143.6	0.04%	199.24	10,984.8	0.02%	208.76	-13,158.8	9.53
Internal	2,220,511.8	195.85	2,220,336.7	208.61	55,860,674.0	99.96%	200.01	51,655,029.2	99.98%	201.01	-4,205,644.7	1.00
Grand Total	2,220,511.8	195.85	2,220,336.7	208.61	55,884,817.6	100.00%	200.01	51,666,014.0	100.0%	201.01	-4,218,803.5	1.00

## Crop of Major Tea Producing &amp; Exporting Countries

Country	Month	2020	2021	2022	(+/-) 2021	2020	2021	2022	(+/-) 2021
Bangladesh *	September	12.14	12.61	14.74	2.13	57.45	64.76	63.83	-0.92
North India	September	163.9	142.6	166.7	24.1	698.7	781.5	808.9	27.4
South India	September	24.1	20.6	23.3	2.7	160.1	181.9	175.8	-6.1
All India	September	188.0	163.2	190.0	26.8	858.8	963.4	984.7	21.3
Sri Lanka	September	22.1	22.8	20.9	-1.9	201.5	234.8	192.4	-42.4
Kenya	July	36.5	34.7	33.9	-0.9	377.0	308.8	304.2	-4.6

\* Source: Bangladesh Tea Board's Monthly Statistical Bulletin

## General + Other Market(s) This/Last Week

**KOLKATA SALE 45- 9<sup>TH</sup> /11<sup>TH</sup> NOVEMBER, 2022**

CTC: There was good demand. Good liquoring Assam Brokens were irregularly easier although Fannings were mostly steady. Liquoring & well-made medium Assams met with better demand and sold at fully firm to at times dearer rates. Better & medium Doors were irregular closely following quality whilst the plainer category was firm. Export accounts showed limited interest on bolder Brokens. Local buyers were active on the Doors & other clean, well-made descriptions.

Tea Category	Brokens	Fannings	Dusts
BEST ASSAMS	410-459	410-435	397-435
GOOD ASSAMS	360-397	335-397	348-385
MED ASSAMS	223-298	211-286	211-298
BEST DOORS	310-335	310-323	NA
GOOD DOORS	261-298	261-298	NA
MED/PLN DOORS	161-223	161-211	NA

**COONOOR SALE 45- 11<sup>TH</sup> NOVEMBER, 2022**

DEMAND: Good demand. MARKET: The total CTC leaf teas sold this week was 92.37 % (1082723kgs) of the total offering of 1172100.97Kgs. Exporters continued to be active on the better medium, medium and plainer category larger and medium Broken grades and selective on the blacker cleaner Fanning grades. However, the fibrous browner sorts continue to be discounted.

CTC Leaf(USC/KG)	Best	Good	Better Medium	Medium	Plain
Larger Brokens	169-194	144-168	139-143	125-138	112-124
Medium Brokens	181-218	155-171	146-154	133-145	119-132
Smaller Brokens	169-214	149-166	145-148	137-144	124-135
Fannings	173-228	155-170	148-154	137-146	125-135

**SILIGURI SALE 45- 10<sup>TH</sup> NOVEMBER, 2022**

LEAF: Good general demand. Levels eased irregularly following decline in quality & saw some withdrawals. Medium/Plainer sorts were around last. DUST: Good demand at steady to easier levels. Buying Pattern: Internal-Main stay. Blenders – Operated.

Quotations (USC/KG)	Brokens(USC/kg)	Fannings(USC/kg)	Dust (USC/kg)
GOOD / BEST	273-391	261-385	261-335
MEDIUM/ BETTER MEDIUM	199-261	199-248	192-248
COMMON / BLF	143-186	149-186	161-186

**MOMBASA SALE 45 – 8<sup>TH</sup> & 9<sup>TH</sup> NOVEMBER, 2022**

Good general demand at irregular levels following quality with an aspect of price adjustment for some categories. There were 205,620 packages (13,824,645.00 kilos) on offer with 29.58% unsold.

CTC QUOTATIONS	BP1 – USC	PF1 – USC	PD – USC	D1 - USC
Best	265 – 534	299 – 333	284 – 362	300 – 365
Good	255 – 320	296 – 308	282 – 312	300 – 350
Good Medium	255 – 302	290 – 304	280 – 293	300 – 345
Medium (KTDA)	250 – 270	244 – 281	258 – 284	245 – 289
Medium (Plantations)	222 – 300	224 – 254	224 – 246	226 – 272
Lower Medium	124 – 248	160 – 226	172 – 236	170 – 234
Plainer	113 – 210	125 – 238	138 – 210	146 – 222